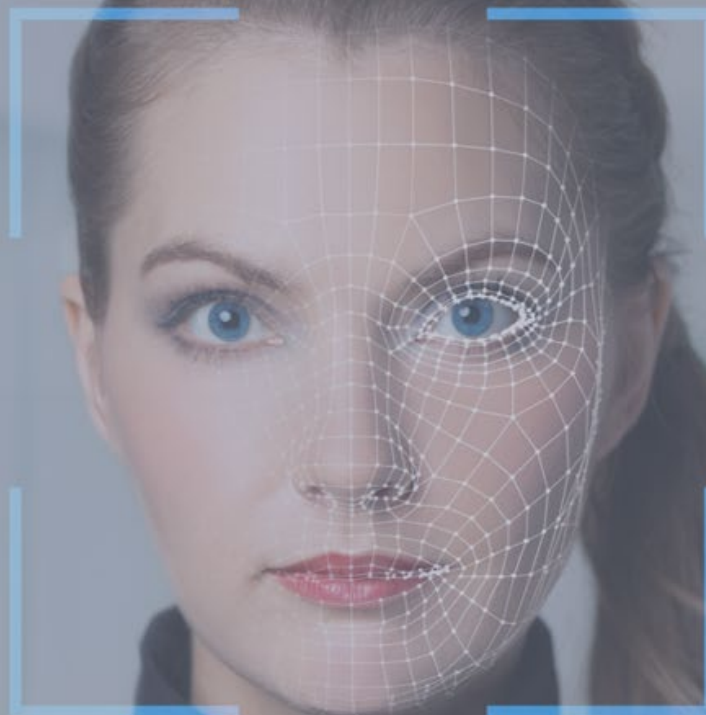


**PSI**

POSITION SUCCESS INDICATOR



intelligent job matching for the future of work

The **POSITION SUCCESS INDICATOR (PSI)** is the next-generation talent DNA testing and sequencing technology that power's the **PROFESSIONAL SUCCESS SYSTEM**.



# YOUR FREE TALENT DNA SNAPSHOT

Located in the **Overall Job Fit** section of your **POSITION SUCCESS PROFILE**

Use this link to take the test or access your profile: [www.hire-direction.com/assessment](http://www.hire-direction.com/assessment)

## Positions where you thrive!

**IDEAL JOB ZONE:** Jobs with **DEFINED PROCESS**

Describes your personal success-pattern, strategic-approach to jobs, and environments where you thrive.

*Get your personalized job fit calculators in the POSITION SUCCESS PLAN!*

## Work you enjoy!

**IDEAL TYPES OF WORK:** Best fit for jobs that focus on **MECHANICAL** and **OPERATIONAL NEEDS**

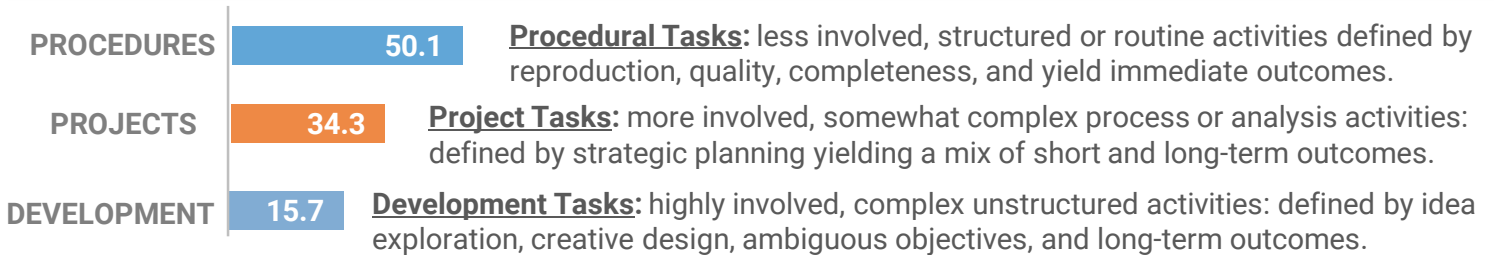
Describes work of high-focus/ engagement; where performance seems effortless.

*Get position success indicators of your fundamental work-style and what sets you apart in your POSITION SUCCESS PLAN!*

## Tasks you perform well!

**IDEAL JOB ACTIVITIES:** Describes preference and performance-capabilities related three main categories of job duties (see chart below).

*Find out exactly how you produce value for employers with your POSITION SUCCESS PLAN!*



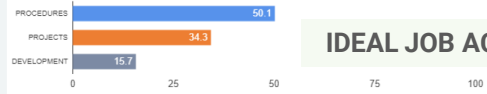
## Overall Job Fit – section example

IDEAL JOB ZONE : Jobs with **DEFINED PROCESS**

IDEAL TYPES OF WORK :

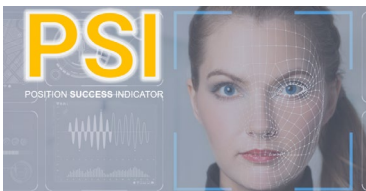
Best fit for jobs that focus on: **MECHANICAL** and **OPERATIONAL** needs.

Maintains consistency to accomplish work and applies focused skills to maintain outcomes. Adds value to team culture by ensuring quality. Engagement is best when role and tasks are well-defined and consistently routine.



### IDEAL JOB ACTIVITIES

## Your Professional Summary & Signature Statement!



Maintains consistency to accomplish work and applies focused skills to maintain outcomes. Adds value to team culture by ensuring quality. Engagement is best when role and tasks are well-defined and consistently routine.

Your Professional Brand ID statement that quickly conveys your fundamental work-style, transferable skills, and universal value to any employer:

*Find more ways to effectively communicate your strengths and positive impact on work and team dynamics with your POSITION SUCCESS PLAN!*



# YOUR PROFESSIONAL PLANS

Use your talent DNA to create

## Occupational Fitness & Professional Wellness

View Sample Plans at: [www.PositionSuccess.com](http://www.PositionSuccess.com)

### Career-Navigation System

#### MAKE THE BEST CAREER-MOVES!

See your talent DNA coded to the universal maps of organizations, positions, and job requirements!

- Translate Your Talent
- Locate The Best Career-path
- Identify The Right Jobs
- Communicate Your Value
- Find Professional Alignment



#### PROFESSIONAL SUCCESS PLAN

MICHAEL SMITH

02/27/2018

NOTE: This report deals specifically with operational performance patterns. It does not measure intelligence, technical knowledge, behaviors, personality, self-presentation nor does it factor in professional experience. It does attempt to uncover operational focus points and how those fit with common organizational requirements and job roles.

We are a talent solutions provider.

### Perfect Interview Tool

#### GET THE RIGHT JOB!

Get your personalized interview strategy, communicate your value, drive the interview, and land the right job!

- Get Your Interview strategy
- Emphasize your strength
- Communicate your potential
- Articulate your value



#### INTERVIEW SUCCESS PLAN

MARIA GARCIA

02/27/2018

NOTE: This report deals specifically with operational performance patterns. It does not measure intelligence, technical knowledge, behaviors, personality, self-presentation nor does it factor in professional experience. It does attempt to uncover operational focus points and how those fit with common organizational requirements and job roles.

We are a talent solutions provider.